

# MAGENTA



CLASSIC

## Open living meets functional style and comfort

The Magenta will prove to be your sanctuary all year round with a grand 8m alfresco, perfect for summer family barbecues, and upstairs media room for those cosy movie nights. The open-plan kitchen and living area invites in the natural light and seamlessly overlooks your outdoor haven while the master suite boasts shared access to the balcony plus accommodates a well-appointed WIR and ensuite, complete with a feature freestanding bathtub to elevate your living experience.

CUSTOMISE YOUR  
FACADE & GIVE YOUR  
HOME STREET APPEAL  
TO SUIT YOUR STYLE.

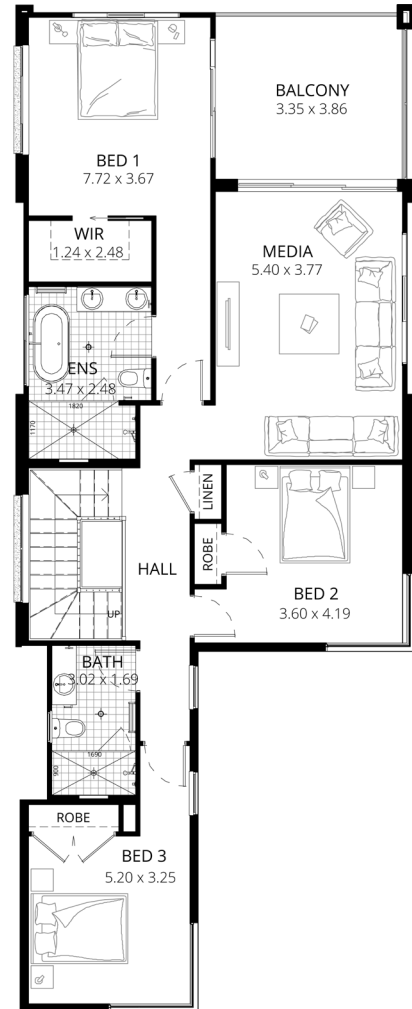
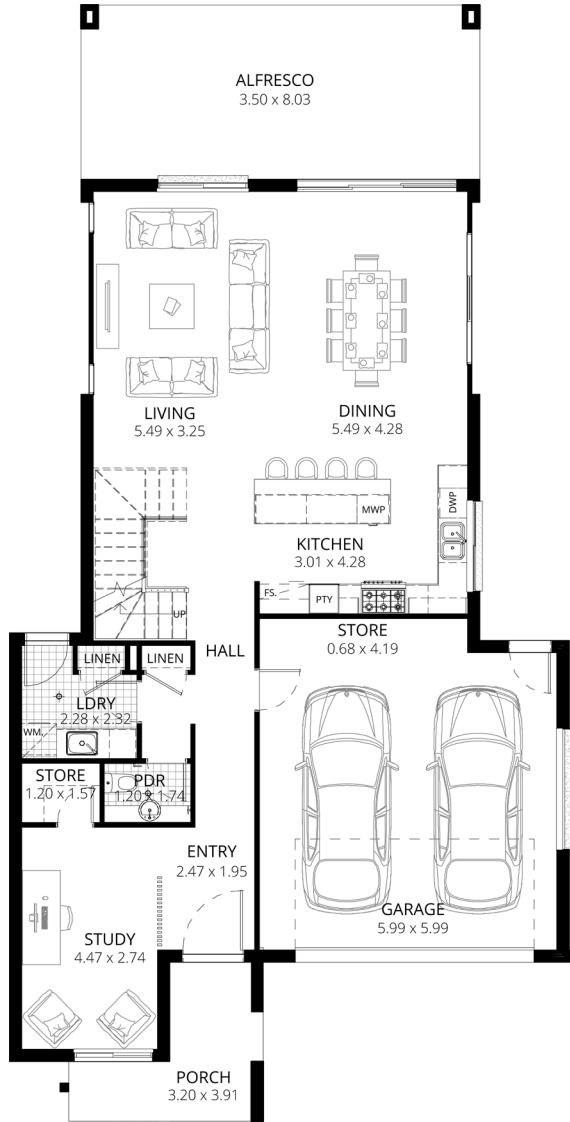
Visit [buildtechhomes.com.au](https://buildtechhomes.com.au)  
or call 1300 560 667

**BUILDTEC**  
*Homes*

# MAGENTA

3 BEDROOMS | 2.5 BATHROOMS | 2 GARAGE

Total house area 315.41 m<sup>2</sup>  
 Total house width 11.27 m  
 Total house depth 22.46 m  
 Suits min block width 13 m



- ✓ Designed to maximise indoor and outdoor living
- ✓ Dedicated study room with feature entry timber screening
- ✓ Upstairs balcony adjoined to spacious media room and master suite

## CREATE YOUR SPACE WITH BUILDTEC HOMES

Uniquely customise your favorite BuildTec Homes design by tailoring the floor plan, facade and finishes to truly create your space.

Visit [buildtechhomes.com.au](https://www.buildtechhomes.com.au)  
 or call 1300 560 667

**BUILDTEC**  
*Homes*