

DEEPDALE



Live large with spacious bedrooms and alfresco

FACADES



CUSTOMISE YOUR
FACADE & GIVE YOUR
HOME STREET APPEAL
TO SUIT YOUR STYLE.

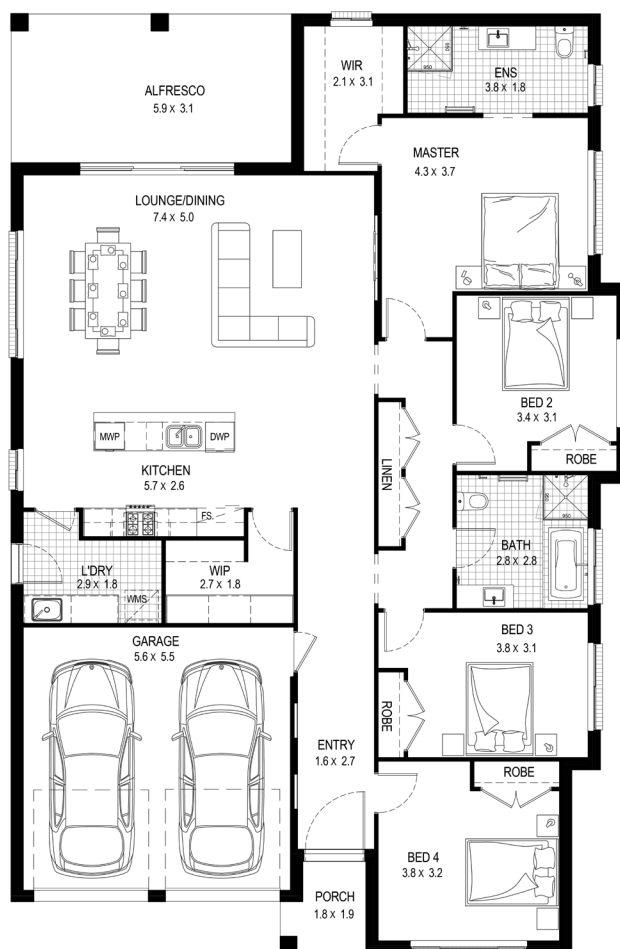
Visit buildtechhomes.com.au
or call 1300 560 667

BUILDTEC
Homes

DEEPDALE

4 BEDROOMS | 2 BATHROOMS | 2 GARAGE

Total house area 237.2 m²
Total house width 12.95 m
Total house depth 19.67 m
Suits min block width 15 m



- ✓ Huge 6 x 3 metre outdoor alfresco area seamlessly adjoined to the open kitchen, lounge and dining area
- ✓ Extra spacious bedrooms for optimal relaxation with built-in robes
- ✓ Large butlers pantry, laundry and ample storage throughout

CREATE YOUR SPACE WITH BUILDTEC HOMES

Uniquely customise your favorite BuildTec Homes design by tailoring the floor plan, facade and finishes to truly create your space.

Visit buildtechhomes.com.au
or call 1300 560 667

BUILDTEC
Homes

Floorplans, facades, & photography are for illustrative purposes and may depict upgrade options available. Sizes and dimensions may vary subject to facade selection. Refer to working drawings for complete dimensions. Plans based on BuildTec Homes Classic Inclusions range however, may include upgrade items above the standard specification. Reproduction in any form either in whole or part is forbidden. Date issued: 16th March 2019.