

BURBANK



Maximise your potential with the Burbank

Whether you're a savvy investor or an extended family wanting to get the most value out of your land, the Burbank combines stylish modern living with it's sleek compact design that ticks all the boxes. The floor to ceiling voids create open and natural light throughout and the multiple living zones including large study nook and separate upstairs living completes this smart and versatile floor plan.

CUSTOMISE YOUR
FACADE & GIVE YOUR
HOME STREET APPEAL
TO SUIT YOUR STYLE.

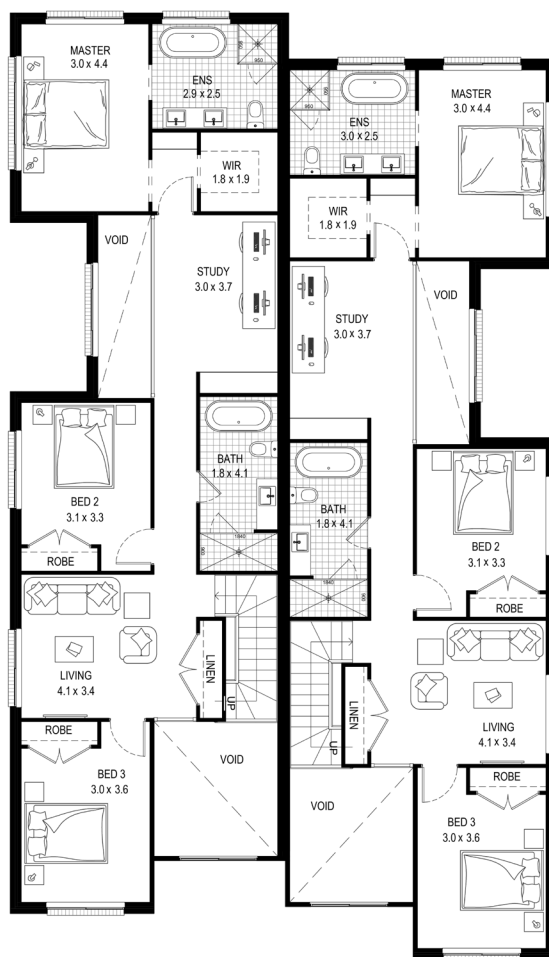
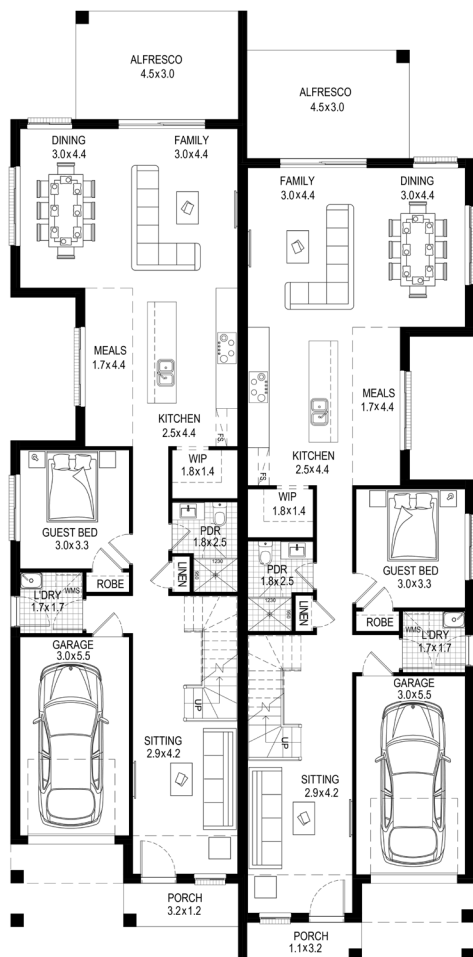
Visit buildtechhomes.com.au
or call 1300 560 667

BUILDTEC
Homes

BURBANK

4 BEDROOMS | 3 BATHROOMS | 1 GARAGE

Total house area 543.32 m²
Total house width 12.83 m
Total house depth 22.19 m
Suits min block width 15 m



- ✓ Gallery style kitchen with view of the floor to ceiling void creating an open and light filled space to enjoy while you cook
- ✓ Private and well appointed master suite with double vanity oversized ensuite and large walk-in robe
- ✓ Separate upstairs living, large study nook and ample storage throughout

CREATE YOUR SPACE WITH BUILDTEC HOMES

Uniquely customise your favorite BuildTec Homes design by tailoring the floor plan, facade and finishes to truly create your space.

Visit buildtechhomes.com.au
or call 1300 560 667

BUILDTEC
Homes

Floorplans, facades, & photography are for illustrative purposes and may depict upgrade options available. Sizes and dimensions may vary subject to facade selection. Refer to working drawings for complete dimensions. Plans based on BuildTec Homes Classic Inclusions range however, may include upgrade items above the standard specification. Reproduction in any form either in whole or part is forbidden. Date issued: 16th March 2019.