

BEAUMONT



CLASSIC

Unrivalled acreage living on a grand scale

Introducing the prestigious Beaumont design. This luxurious home represents the ultimate in modern family living. Enter through the grand entry into the expansive dining and family area, seamlessly connected to the oversized kitchen and walk in scullery. This home leaves nothing unthought of, the separate games room adjoining the alfresco creates the perfect family getaway or entertaining area and will prove a family favourite. The master bedroom has been designed as a luxury parents retreat, overlooking the private verandah, his and her robes and detailed ensuite this master suite has no rival.

CUSTOMISE YOUR
FACADE & GIVE YOUR
HOME STREET APPEAL
TO SUIT YOUR STYLE.

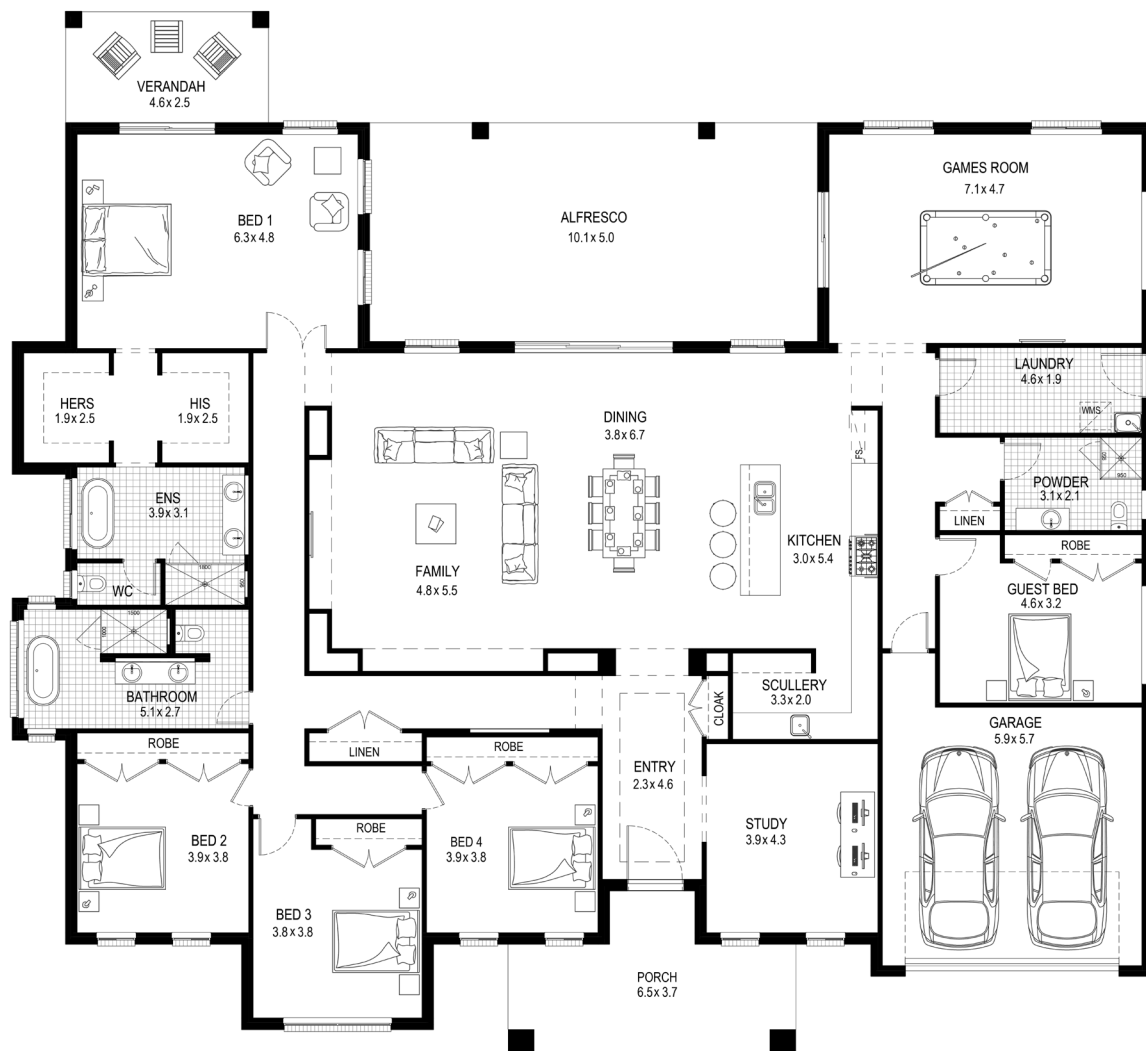
Visit buildtechhomes.com.au
or call 1300 560 667

BUILDTEC
Homes

BEAUMONT

5 BEDROOMS | 3 BATHROOMS | 2 GARAGE

Total house area 477.4 m²
Total house width 25.67 m
Total house depth 23.48 m



- ✓ Resort-style master suite overlooking private verandah
- ✓ Luxurious ensuite and main bathroom with feature niches above vanities and inset mirrors
- ✓ Prestigious galley kitchen featuring walk-in scullery and generous island bench

CREATE YOUR SPACE WITH BUILDTEC HOMES

Uniquely customise your favorite BuildTec Homes design by tailoring the floor plan, facade and finishes to truly create your space.

Visit buildtechhomes.com.au
or call 1300 560 667

BUILDTEC
Homes

Floorplans, facades, & photography are for illustrative purposes and may depict upgrade options available. Sizes and dimensions may vary subject to facade selection. Refer to working drawings for complete dimensions. Plans based on BuildTec Homes Classic Inclusions range however, may include upgrade items above the standard specification. Reproduction in any form either in whole or part is forbidden. Date issued: 16th March 2019.